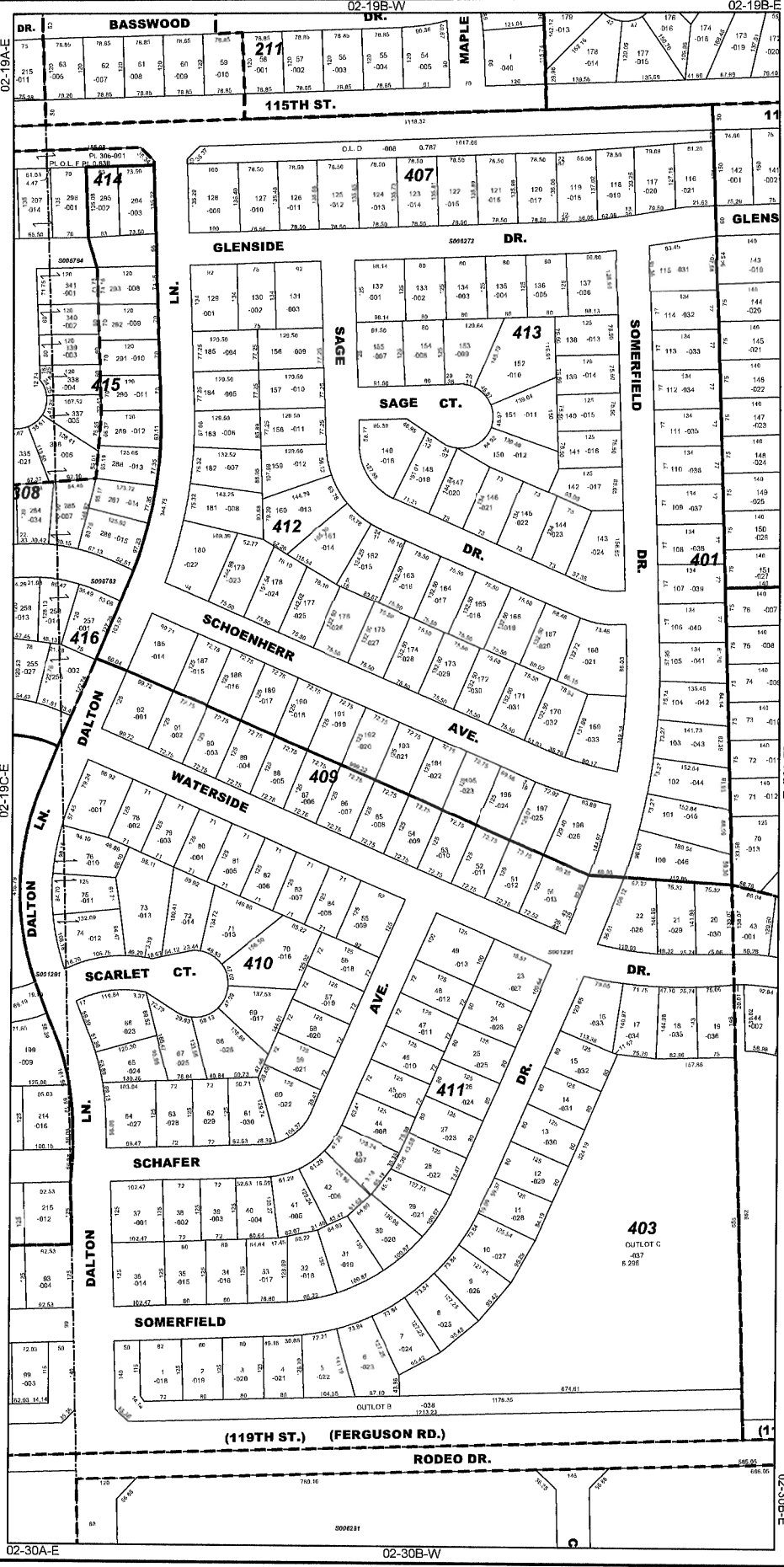




- Subdivision List**
- S001291
Sommerfield Unit 1
R98-150249
 - S006272
Sommerfield Unit 2A
R99-092080
 - S006273
Sommerfield Unit 2
R99-092076
 - S006763
Sommerfield Unit 3
R2000-063174
 - S006764
Sommerfield Unit 3A
R2000-063175





Lawrence M. Walsh
County Executive
Rhonda R. Novak
Supervisor of Assessments

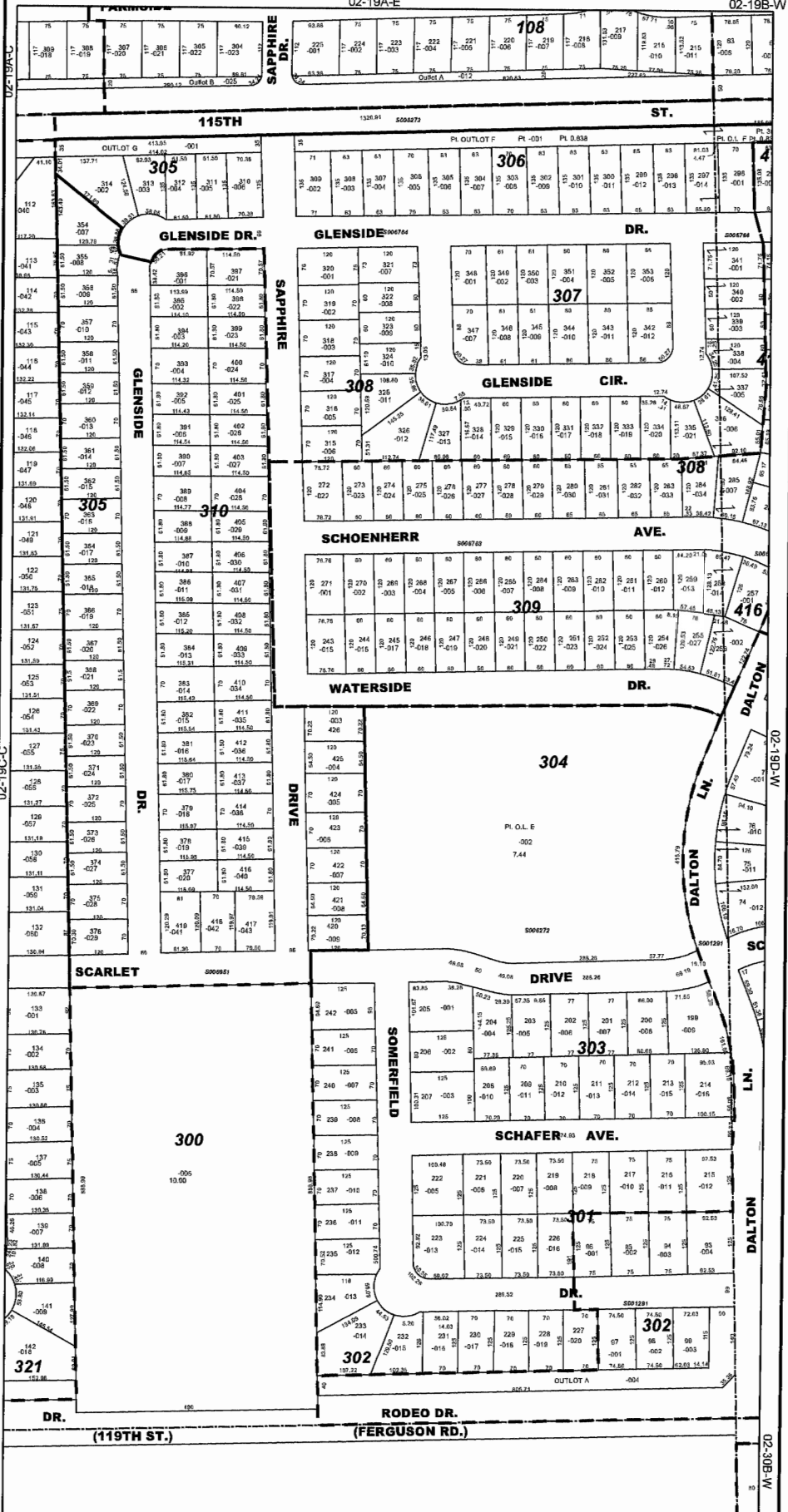
Disclaimer of Warrantee and Accuracy of Data: Although the data developed by Will County for its maps, tables, and Geographic Information System has been produced and compiled from sources deemed to be reliable, the County does not warrant the accuracy, completeness, or timeliness of any information. This disclaimer applies to all uses of the information, including but not limited to the determination of ownership, taxes, or other legal rights. Changes to the information may occur without notice. The County does not assume any liability for damages or losses resulting from the use of this information. The County does not assume any liability for damages or losses resulting from the use of this information. The County does not assume any liability for damages or losses resulting from the use of this information.

Will County, Illinois

Tax Assessment Map

Revised for the 2005 Assessment
Copyrighted 2005 by Will County GIS Division

Map Page 02-19C-E
DuPage Township
E. 1/2 S.W. 1/4 Sec. 19 T.37N. R.10E.



- Subdivision List
- S001291 Somerfield Unit 1
 - R96-150249 S005273 Somerfield Unit 2A
 - R99-092080 S005273 Somerfield Unit 2
 - R99-092078 S006783 Somerfield Unit 3
 - R2000-083174 S006784 Somerfield Unit 3A
 - R2000-093775 S008942 Town & Country Sub Unit 1
 - R2001-096454 S008951 Somerfield Unit 4
 - R2001-092856